



International Etchells National & British Open Championship

Saturday 26, Sunday 27 & Monday 28 May 2018

The organising authority is Royal London Yacht Club in association with the UK International Etchells Class (Cowes Fleet)

Sailing Instructions

1. Rules

- 1.1 The regatta will be governed by the rules as defined in *The Racing Rules of Sailing 2017-2020* (RRS), rules of the International Etchells Class Association, the notice of race and these sailing instructions.
- 1.2 In the event of conflict between the notice of race and these sailing instructions, the sailing instructions shall prevail. This changes rule 63.7.

2. Notices to Competitors

Notices to competitors will be posted on the official notice board at the Cowes Yacht Haven (CYH) and may be repeated at the Royal London YC (RLYC).

3. Changes to Sailing Instructions

- 3.1 Any change to the sailing instructions made ashore will be posted by 0900 on the day it will take effect, except that any change to the schedule of races will be posted by 2000 on the day before it will take effect.
- 3.2 Oral alterations to the sailing instructions on the water may be made by VHF before a warning signal in accordance with rule 90.2 (c). The channel to be used will be advised at the briefing.

4. Signals Made Ashore

- 4.1 Signals made ashore will be displayed at the CYH flagstaff and may be repeated at the RLYC club flagstaff.
- 4.2 When flag AP is displayed ashore, '1 minute' is replaced by 'not less than 45 minutes.' This changes race signals AP.

5. Schedule of Events

5.1

Date 2018	Time	Event	Location
Friday 25 May	1800–1900	Crew weigh-in and sail nomination	CYH
Saturday 26 May HW: 0956 4.23m	0800–0900	Late crew weigh-in and sail nomination	CYH
	0900	Competitors Briefing	CYH
	1155	First Warning Signal	
	1900	Regatta Dinner	RLYC
Sunday 27 May HW: 1041 4.34m	1055	First Warning Signal	
Monday 28 May HW: 1125 4.40m	1055	First Warning Signal	
	asap after racing	Prizegiving	CYH

Note: HW times are all BST, HW Portsmouth

- 5.2 Three races are scheduled on each day but this may be altered in the event of an adverse weather forecast. Subsequent races will start as soon as possible after the last boat finishes each race.
- 5.3 No warning signal will be made after 1700 on Saturday or Sunday and not after 1530 on Monday unless there is a postponement or general recall during a starting sequence.

6. Class Flags

The class flag will be IC flag E.

7. Racing Area

The starting area/committee vessel location will be announced on VHF from approximately one hour before the first warning signal.

8. The Courses

- 8.1 The diagrams in these sailing instructions show the courses to be sailed below each diagram, including the order in which marks are to be passed and the side on which each mark is to be left.
- 8.2 No later than the warning signal, the race committee will announce on VHF or display on the committee boat the approximate distance and compass bearing of the first mark. In addition, the course will be displayed or announced on VHF using the single letter and number identifier or a series of two digit identifiers in SI 28 or from the overall list of marks in these sailing instructions before the warning signal and may be repeated after the warning signal. This changes rule 27.1

9. Marks

Marks will be orange inflatable marks. Change marks will be black. The ODM will be a yellow inflatable mark. The finishing mark will be a small orange mark laid one side or the other of the committee vessel according to the course to be sailed. If necessary navigation buoys or fixed racing marks listed may be used to provide windward / leeward courses.

10. The Start

- 10.1 **Starting Alert:** To alert boats that a race will soon begin from the committee vessel, an orange flag will be displayed with one sound at least five minutes before the first warning signal.
- 10.2 **Starting Line:** The starting line is between a staff displaying an orange flag on the committee vessel at the starboard end and the course side of the mark at the port end.

11. Recalls and Starting Penalties

- 11.1 **Individual Recalls:** Sail numbers of individually recalled boats may be broadcast on VHF as soon as practical. Failure to broadcast sail numbers, or for a boat to hear such broadcast, or the order of the broadcast, shall not be grounds for redress. This changes rule 62.1(a).
- 11.2 **Late Starting:** A boat starting later than five minutes after her starting signal will be scored Did Not Start without a hearing. This changes RRS A4 and A5.

12. Change of the Next Leg of the Course

- 12.1 Changing race signals flag 'C' and rule 33, the position of a laid inflated mark may be adjusted by up to approximately plus or minus 10 degrees relative to the previous laid mark(s) and up to approximately 300 metres to windward or leeward without signalling in accordance with rule 33 (a) or (b).
- 12.2 To change the next leg of the course beyond the tolerances in 12.1, the race committee will lay a new mark (or move the finishing line) and remove the original mark as soon as practicable. When in a subsequent change a new mark is replaced, it will be replaced by an original mark.

13. The Finish

The finishing line is between the staff or halyard displaying an orange flag on a committee vessel and the course side of the ODM of the start/finish line or the finish line or the last mark of the course.

14. Penalty System

The first two sentences of rule 44.1 are changed to: 'A boat may take a One Turn Penalty when she may have broken a rule of Part 2 or RRS 31 while racing. However, when she may have broken a rule of Part 2 while in the zone around a mark other than a starting mark, her penalty shall be a Two Turns Penalty'.

15. Time Limit

- 15.1 The time limit will be 90 minutes.
- 15.2 Boats failing to finish within 10 minutes after the first boat sails the course and finishes may be awarded a finishing position or scored Did Not Finish without a hearing. This changes rules 35 and A5.

16. Protests, Requests for Redress and Arbitration

- 16.1 Protest forms are available at the Royal London YC and at the Cowes Yacht Haven. Protests and requests for redress or reopening shall be delivered to the Cowes Yacht Haven within the protest time limit. Contact mobile phone numbers should be included on the protest form.
- 16.2 The protest time limit is 90 minutes after the last boat has finished the last race of the day.
- 16.3 Notices will be posted on the official notice board at the Cowes Yacht Haven and may be repeated at the RLYC no later than 30 minutes after the protest time limit to inform competitors of hearings in which they are parties or named as witnesses. Hearings will be held in the protest room, located at Royal London YC, beginning at the time posted.
- 16.4 Notices of protests by the race committee or protest committee will be posted to inform boats under rule 61.1(b).
- 16.5 Breaches of sailing instructions 18, 21, 23, 24, 25, 26, 27 and rules 40 and 55 will not be grounds for a protest by a boat. This changes rule 60.1(a). Penalties for these breaches may be less than

disqualification if the protest committee so decides. The scoring abbreviation for a discretionary penalty imposed under this instruction will be DPI.

- 16.6 On the last scheduled day of racing a request for reopening a hearing shall be delivered:
- (a) within the protest time limit if the requesting party was informed of the decision on the previous day;
 - (b) no later than 30 minutes after the requesting party was informed of the decision on that day.
- This changes rule 66.
- 16.7 On the last scheduled day of racing a request for redress based on a protest committee decision shall be delivered no later than 30 minutes after the decision was posted. This changes rule 62.2.

17. Scoring

- 17.1 Nine races are scheduled and three races are required to constitute a series.
- 17.2 One discard will be applied after four races have been completed. This changes RRS Appendix A2.

18. Safety Regulations

- 18.1 All boats shall sail on starboard tack close to the stern of the committee boat and hail their sail number prior to the start of the first race each day. At the same time, a boat shall notify the race committee if any of their sails carry different sail numbers to their mainsail.
- 18.2 A boat that retires from a race shall notify the race committee as soon as possible on VHF, or by hailing an official regatta support boat/rib.

19. Replacement of Crew or Equipment

- 19.1 Substitution of competitors will not be allowed without written approval of the race committee.
- 19.2 Substitution of damaged or lost equipment will not be allowed unless authorised by the race committee. Requests for equipment substitution shall be made in writing to the race committee.

20. Equipment and Measurement Checks

A boat or equipment may be inspected at any time for compliance with the Class Rules and Sailing Instructions. On the water, a boat may be instructed by a race committee equipment inspector or measurer to proceed immediately to a designated area for inspection.

21. Protests and Retirements

Boats are requested to notify protests and retirements by VHF.

22. Support Boats

Team leaders, coaches and other support personnel shall stay outside areas on the right side of the course facing wind where boats are racing from the time of the preparatory signal for each start until all boats have finished or retired or the race committee signals a postponement, general recall or abandonment.

23. Haul-Out Restrictions

- 23.1 Boats shall be afloat before 1800 on Friday 25 May 2018
- 23.2 Boats shall not be hauled out during the event except with and in accordance to the terms of the prior written permission of the race committee.

24. Diving Equipment and Plastic Pools

Underwater breathing apparatus and plastic pools or their equivalent shall not be used around competing boats between the end of registration and the end of the Regatta.

25. Radio Communication

Except in an emergency, a boat shall neither make radio transmissions while racing nor receive radio communications not available to all boats. This restriction also applies to mobile telephones. The

race committee may broadcast information to competitors on VHF both before and during a race. Failure to receive or transmit shall not be grounds for redress. This changes rule 62.1(a).

26. Disclaimer of Liability and Risk Statement

Competitors participate in the regatta entirely at their own risk. See RRS 4, 'Decision to Race'. The organising authority will not accept any liability for material damage or personal injury or death sustained in conjunction with or prior to, during, or after the regatta.

Rule 4 of the RRS states: 'The responsibility for a boat's decision to participate in a race or to continue racing is hers alone'.

Sailing is by its nature an unpredictable sport and therefore inherently involves an element of risk. By taking part in the event, each competitor agrees and acknowledges that:

- a. They are aware of the inherent element of risk involved in the sport and accept responsibility for the exposure of themselves, their crew and their boat to such inherent risk whilst taking part in the event;
- b. They are responsible for the safety of themselves, their crew, their boat and their property whether afloat or ashore;
- c. They accept responsibility for any injury, damage or loss to the extent caused by their own actions and omissions;
- d. Their boat is in good order, equipped to sail in the event and they are fit to participate;
- e. The provision of a race management team and other officials and volunteers by the event organiser does not relieve them of their own responsibilities;
- f. *Not applicable*;
- g. It is their responsibility to familiarize themselves with any risks specific to this venue or this event drawn to their attention in any rules and information produced for the venue or event and to attend any safety briefing held for the event.

27. Insurance


Each participating boat shall be insured with valid third-party liability insurance with a minimum cover of £3,000,000 per event.


28. Two Digit Identifiers


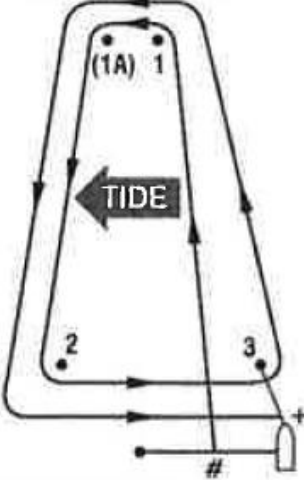
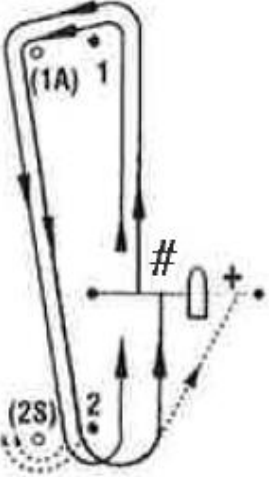
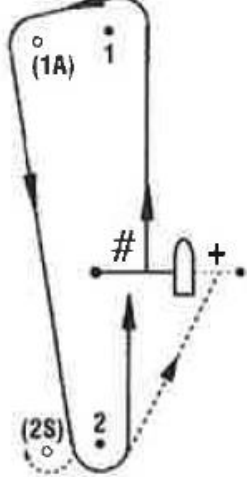
- | | |
|----------------------------------|---|
| 9A Windward Laid Mark | 9E Leeward Gate (Above the start line) |
| 9B Windward Spreader Mark | 9F Leeward Gate (Below the start line) |
| 9C Leeward Laid Mark | 9G Start / Finish Line (#) |
| 9D Leeward Spreader Mark | 9H Finish Line (+) |

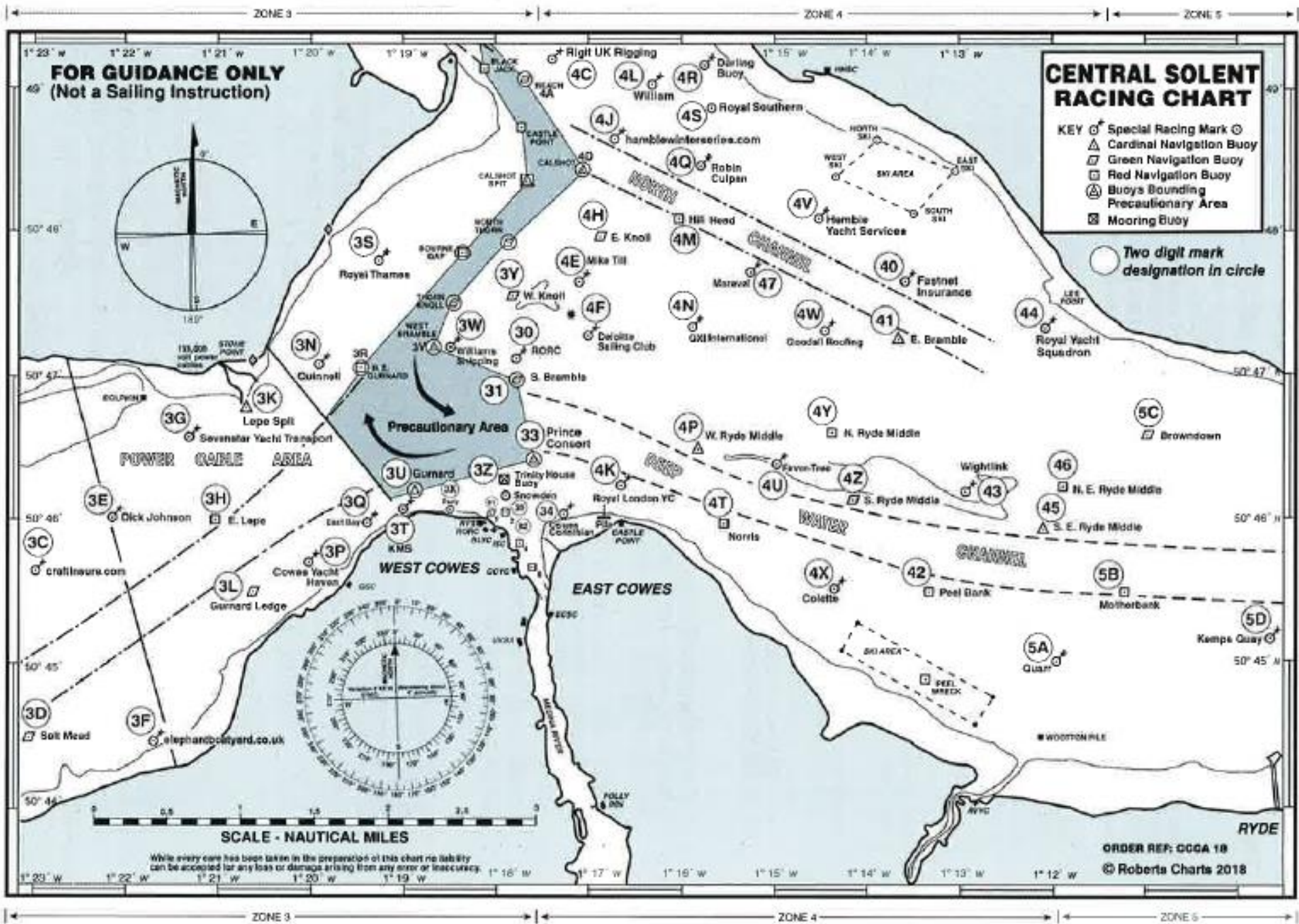
The course to be sailed is shown below each course diagram. Diagrams are not to scale.

- Leave all marks to port unless indicated (S) to starboard.
- # Start / Finish Line + Finishing Line
- Marks shown in brackets () will not be laid unless the designated symbol is displayed or announced as follows:

 displayed means a Spreader or Offset Mark (1A) is laid

 displayed means the Leeward Mark is a gate

COURSE A	COURSE B	COURSE C	COURSE D
			
<p>A1 Start - 1 - (1A) - 2(2S) - 1</p> <p>A2 Start - 1 - (1A) - 2(2S) - 1 - (1A) - 2(2S) - 1 (shown above)</p>	<p>B1 Start - 1 - (1A) - 2 - +</p> <p>B2 Start - 1 - (1A) - 2 - 3 - 1 - (1A) - 2 - + (shown above)</p>	<p>C1 Start - 1 - (1A) - 2(2S) - # or +</p> <p>C2 Start - 1 - (1A) - 2(2S) - 1 - (1A) - 2(2S) - # or +</p> <p>C3 Start - 1 - (1A) - 2(2S) - 1 - (1A) - 2(2S) - 1 - (1A) - 2(2S) - # or + (shown above)</p>	<p>D1 Start - 1 - (1A) - 2(2S) - # or +</p> <p>D2 Start - 1 - (1A) - 2(2S) - # - 1 - (1A) - 2(2S) - # or +</p> <p>D3 Start - 1 - (1A) - 2(2S) - # - 1 - (1A) - 2(2S) - # - 1 - (1A) - 2(2S) - # or +</p>



Central Solent Course Mark Two Digit Identifiers 2018

3A	West Lepe	30	RORC	4V	Hamble Yacht Services
3B	Newtown East	31	South Bramble	4W	Goodall Roofing
3C	craftinsure.com	33	Prince Consort	4X	Colette
3D	Salt Mead	34	Cowes Corinthian	4Y	North Ryde Middle
3E	Dick Johnson	39	Snowden	4Z	South Ryde Middle
3F	elephantboatyard.co.uk	4C	Rigit UK Rigging	40	Fastnet Insurance
3G	Sevenstar Yacht Transport	4E	Mike Till	41	East Bramble
3H	East Lepe	4F	Deloitte Sailing Club	42	Peel Bank
3K	Lepe Spit	4H	East Knoll	43	Wightlink
3L	Gurnard Ledge	4J	hamblewinterseries.com	44	Royal Yacht Squadron
3N	Quinnell	4K	Royal London YC	45	S E Ryde Middle
3P	Cowes Yacht Haven	4L	William	46	N E Ryde Middle
3Q	East Bay	4M	Hillhead	47	Maraval
3S	Royal Thames	4N	QXI International	5A	Quarr
3T	KMS	4P	West Ryde Middle	5B	Motherbank
3U	Gurnard	4Q	Robin Culpan	5C	Browndown
3W	Williams Shipping	4R	Darling Buoy	5D	Kemps Quay
3X	Party	4S	Royal Southern	82	No 2 Cowes Harbour Buoy
3Y	West Knoll	4T	Norris	91	RYS ODM Finishing Mark
3Z	Trinity House Buoy	4U	Fever Tree		